

A Discrete Constitutive Model for Transverse and Shear Damage of Symmetric Laminates with arbitrary Stacking Sequence

E. J. Barbero^{1,*}, G. Sgambitterra², A. Adumitroaie¹ and X. Martinez¹

1 Mechanical and Aerospace Engineering, West Virginia University, Morgantown, WV 26506, USA.

2 Department of Structural Engineering, University of Calabria, Arcavacata di Rende (CS), 87030, Italy.

ABSTRACT

A damage constitutive model in conjunction with a 2-D finite element discretization is presented for predicting onset and evolution of matrix cracking and subsequent stiffness reduction of symmetric composite laminates with arbitrary stacking sequence subjected to membrane loads. The formulation uses laminae crack densities as the only state variables, with crack growth driven by both mechanical stress and residual stress due to thermal expansion. The formulation is based on fracture mechanics in terms of basic materials properties, lamina moduli, and critical strain energy release rates G_{IC} and G_{IIC} , only. No additional adjustable parameters are needed to predict the damage evolution. Spurious strain localization and mesh size dependence are intrinsically absent in this formulation. Thus, there is no need to define a characteristic length. Comparison of model results to experimental data is presented for various laminate stacking sequences. Prediction of crack initiation, evolution, and stiffness degradation compare very well to experimental data.

KEYWORDS

Laminated composites; finite elements; matrix cracks; fracture mechanics; crack density.

* Professor, corresponding author. The final publication is available at <http://dx.doi.org/10.1016/j.compstruct.2010.06.011> }

1 INTRODUCTION

Laminate composite materials have many applications in different fields like nautical and aeronautical structures, but are affected by many damage modes like matrix cracking, fiber breakage, fiber matrix debonding, etc [1]. Therefore, the prediction of damage initiation, damage growth and propagation up to fracture are important for evaluating the load-carrying capacity, damage tolerance and safety of composite structures.

Under in-plane load in the direction perpendicular to the fibers, the first damage mode observed is transverse matrix cracking. Its presence triggers the initiation of other damage modes such as delamination, fiber-matrix debonding and fiber breakage. In addition, matrix cracks lead to stiffness reduction and stress redistribution to adjacent laminae. Furthermore matrix crack increase the permeability of the material, which provides a path for liquids or gas to reach the fibers and thus damage the composite.

Therefore, prediction of matrix cracking initiation and evolution in laminate composites is a problem of great relevance. Usually matrix cracking appears when a tensile stress perpendicular to the fiber is applied, like in a cross-ply laminate, but this is not the only case. For example Varna et al. [2] found using experimental tests that matrix cracks appear also for balanced laminate for angles as low as 40° . Additional experimental data can be found from other authors for unbalanced laminates [3,4].

Damage modeling of laminate composites can be approached in several ways. Strength-based failure criteria are commonly used with the finite element method to predict failure events in composites structures. The problem of these criteria is that they need experimental lamina strength values (transverse tensile strength F_{2T} and shear strength F_6), which are function of the lamina thickness and the laminate stacking sequence (LSS). The thickness dependency can be accounted by using in situ values [5,6,7,8], but the dependency on LSS is not easily accounted for. Furthermore, strength criteria are not able to provide information about crack evolution, implying that the stiffness degradation scheme compatible with strength criteria is the ply discount method. This manuscript presents an

alternative formulation that does not need calculation of in-situ strengths. In fact, in-situ strengths could be calculated from the results of this formulation, but there is no need to do so because the present formulation provides excellent estimates of crack initiation on any and all laminae, as well as crack evolution, stiffness reduction and stress redistribution. When this stress redistribution is used along with fiber-dominated failure criteria, the model is able to predict ultimate strength of the laminate.

Continuum Damage Mechanics (CDM) have been used by many researchers in recent years. The method was originally developed by Kachanov [9] and Rabotnov [10] and it can be used to predict different composite failure modes such as matrix cracking, fiber failure and delamination [11-18]. A plane stress continuum damage mechanics for composite materials [19] was implemented for shell elements into an explicit finite element code but it does not take into account the problem about mesh dependence on the solution. A plane stress failure model was proposed in [20] and extended in [21] for a three-dimensional failure model. The authors found good correlation between numerical and experimental results. However, mesh dependence and strain localization are not addressed. Therefore, it must be noted that there are some disadvantages to using continuum damage mechanics. One of these disadvantages is the difficulty for obtaining the model parameters from experimental data. Another is that when the model is developed in a finite element code, it is affected by mesh dependence on the solution.

Another interesting approach is proposed in [22,23,24], consisting of an analytical solution of strain and stress in a representative volume element (RVE). This approach is particularly interesting because the damage moduli of the laminate depend only on the crack density. The limitation of [22,23] is that the laminate stacking sequence (LSS) is restricted to particular cases. An analytical solution is presented in [25] using oblique coordinate system, for two sets of arbitrary oriented cracking laminae and extended for arbitrary, yet symmetric LSS in [26].

Most applications of composites involve thin laminated plates or shells under the action of predominantly membrane loads. Since the thickness of the laminate is usually small compared with the in-plane dimension of the plate, it can be assumed that every layer is in a state of plane stress. Then, in this paper, a damage constitutive model cast into a finite element discretization using plane elements is proposed to evaluate stiffness reduction and matrix cracking evolution for symmetric laminate with arbitrary LSS under in-plane tension and in-plane shear.

Usually, a characteristic length needs to be specified or estimated by the user when a continuum formulation is discretized. In contrast, the constitutive model developed herein does not need any additional parameters, such as characteristic length, in order to evaluate the energy release rate. Furthermore, the model proposed does not have problems of instability of the solution as function of the mesh used, i.e., the constitutive model is mesh independent. The only dependence of the quality of the solution is introduced by the quality of the stress gradients that are computed by the finite element method and thus they are mesh dependent, but the constitutive model does not add additional mesh dependence.

Matrix cracking is predicted by a combination of an analytical solution for the damage activation function g and a return mapping algorithm (RMA) to restore equilibrium upon damage. The shear lag analysis is inspired by the work in [23,25,26], developed for a single lamina using a coordinate system aligned with the crack direction [26], and taking into account the stiffness of the remaining laminae by an homogenization method [27,28]. Thermal expansion effects are included in the formulation.

The resulting constitutive model is implemented into a user material subroutine in ANSYS. The simulations performed show good comparison to experimental data.

2 MATRIX CRACKING UNDER IN-PLANE LOADING

It is well known that the initiation of the transverse cracks in composite laminates is related to the residual stress, the stacking sequence, the thicknesses of the laminae and the properties of the laminae. For transverse cracks in a lamina that is embedded in a laminate

under in-plane loading, the cracks are under a mixed mode I (opening) and mode II (shear) loading condition. Mode III (tearing) is absent due to the constraining effect of the adjacent laminae [29, 30]. There are enough pre-existing defects in a polymer matrix composite to be able to assume that pre-existing, representative cracks are always present and ready to propagate when a Griffith's-type the fracture criteria is met. Otherwise, the energy release rate is zero for a crack of zero length, and it attains negligible values for very small cracks, as in the case of crack coalescence phenomena [31]. Furthermore, experimental evidence indicates that matrix cracks propagate suddenly and over long distances [33,34,35]. Therefore, in this paper, “initiation” refers to the onset of propagation of existing defects. Correspondingly, “propagation” refers to further accumulation of fully propagated cracks, which is accounted for as an increased crack density.

In this section, a formulation is proposed to evaluate the reduction in thermoelastic properties (stiffness and thermal expansion coefficients) of the laminate as a function of the crack density λ in any lamina of the laminate. The formulation uses a representative volume element (RVE) enclosed by the mid-surface and the top-surface of the laminate denoted with t (Figure 1), the surface of two consecutive cracks, and a unit length parallel to the cracks. The length of the RVE is equal to $2l$ (distance between two adjacent cracks), and is related to the crack density that is the inverse of this distance ($\lambda=1/2l$). The ingredients for the proposed model are: the damage variables $D_{ij}^{(n)}(\lambda_n)$, $D_{ij}^{\alpha(n)}(\lambda_n)$ ($i,j = 1,2,6$; n =layer number) that represent the reduction in stiffness and coefficient of thermal expansion (CTE) of individual plies as a function of the ply crack density λ_n (the state variable of the problem), and the damage activation function g , as a function of energy release rate G_I and G_{II} , that delimit the damage and no-damage domain.

The proposed constitutive model, discretized by finite elements, evaluates damage for in-plane loading case in five steps:

- Evaluation of undamaged moduli for the laminate (strain applied is equal to zero) ;
- Laminate stiffness reduction;

- Lamina stiffness reduction;
- Evaluation of the damage activation function g ;
- Lamina-iteration with a RMA (return mapping algorithm);
- Laminate iteration;

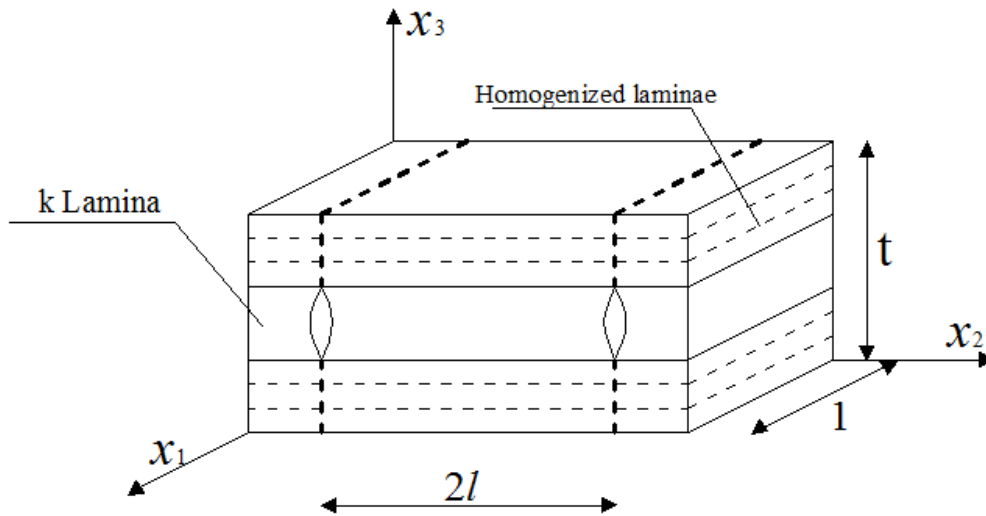


Figure 1. Representative volume element (RVE) in the coordinates of lamina k .

2.1 OVERALL THERMOELASTIC PROPERTIES OF THE UNDAMAGED LAMINATE

In this first step, it is described how the routine evaluates the overall elastic properties for the undamaged laminate. Three coordinate systems are used (Figure 1 and 2): the laminate coordinate system (X, Y, Z ; Figure 2) where loads and boundary conditions are applied, the lamina coordinate system ($1, 2, 3$; Figure 2) with the 1-axis along the fiber direction of each lamina, and the cracking lamina coordinate system (x_1, x_2, x_3 ; Figure 1) coinciding with the lamina coordinate system of the current cracking lamina k . The later coordinate system is very important to the proposed formulation because it is used to solve for displacements around the crack, strains, energy release rate, and crack density in the cracking lamina.

The following notation is used in this paper. An overline indicates an undamaged (virgin) material property, stiffness, compliance or CTE. Lack of decoration on these quantities indicates a damaged quantity. On stiffness and compliances, it is not possible to identify the

coordinate system by the subscript or by the decoration. Instead, the coordinate system is made evident by the subscripts used on the stress and strain, or it will be explicitly stated when needed as in eqn. (3). The stress-strain relationship for in-plane stress in the lamina coordinate system (1,2,3) (Figure 1) is [32]:

$$\begin{bmatrix} \sigma_1 \\ \sigma_2 \\ \sigma_6 \end{bmatrix}^{(n)} = \begin{bmatrix} \bar{Q}_{11} & \bar{Q}_{12} & 0 \\ \bar{Q}_{12} & \bar{Q}_{22} & 0 \\ 0 & 0 & \bar{Q}_{66} \end{bmatrix}^{(n)} \cdot \left(\begin{bmatrix} \varepsilon_1 \\ \varepsilon_2 \\ \gamma_6 \end{bmatrix}^{(n)} - \begin{bmatrix} \bar{\alpha}_1 \\ \bar{\alpha}_2 \\ 0 \end{bmatrix}^{(n)} \cdot \Delta T \right) \quad (1)$$

where $\bar{Q}_{11} = \bar{E}_1 / \Delta$, $\bar{Q}_{12} = \bar{Q}_{21} = \bar{E}_1 \cdot \bar{\nu}_{12} / \Delta$, $\bar{Q}_{22} = \bar{E}_2 / \Delta$, $\Delta = 1 - \bar{\nu}_{12} \cdot \bar{\nu}_{21}$.

The Poisson's coefficients $\bar{\nu}_{12}$ and $\bar{\nu}_{21}$ are related by the symmetry property $\bar{\nu}_{21} / \bar{E}_2 = \bar{\nu}_{12} / \bar{E}_1$. The coefficients of thermal expansion (CTE) $\bar{\alpha}_1$ and $\bar{\alpha}_2$, represent the thermal expansion in the direction of the fibers and perpendicular to the fibers, respectively, and ΔT is the change in temperature.

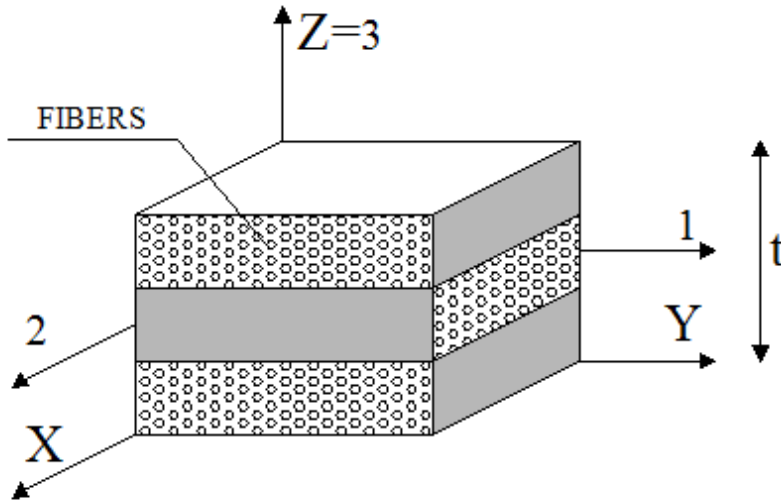


Figure 2. Lamina (1-2-3) and laminate (X,Y,Z) coordinate system.

A laminate is a set of lamina with various fiber orientations which are bonded together. Then the stress-strain relationship in the coordinate (x_1, x_2, x_3) shown in Figure 1 is:

$$\begin{bmatrix} \sigma_{x_1} \\ \sigma_{x_2} \\ \sigma_{x_3} \end{bmatrix}^{(n)} = \begin{bmatrix} \bar{Q}_{11} & \bar{Q}_{12} & \bar{Q}_{16} \\ \bar{Q}_{12} & \bar{Q}_{22} & \bar{Q}_{26} \\ \bar{Q}_{16} & \bar{Q}_{26} & \bar{Q}_{66} \end{bmatrix}^{(n)} \left(\begin{bmatrix} \varepsilon_{x_1} \\ \varepsilon_{x_2} \\ \gamma_{x_1x_2} \end{bmatrix}^{(n)} - \begin{bmatrix} \bar{\alpha}_{x_1} \\ \bar{\alpha}_{x_2} \\ \bar{\alpha}_{x_1x_2} \end{bmatrix}^{(n)} \Delta T \right) \quad (2)$$

where the transformation equation, for the stiffness matrix, from the lamina coordinate system (1,2,3) to the coordinate system of the cracking lamina k (x_1, x_2, x_3) is:

$$[Q_{(x_1, x_2)}] = [T]^{-1} [Q_{(1,2)}] [T]^T \quad (3)$$

and $[T]$ is the transformation matrix given by:

$$[T] = \begin{bmatrix} m^2 & n^2 & 2mn \\ n^2 & m^2 & -2mn \\ -mn & nm & m^2 - n^2 \end{bmatrix} \quad (4)$$

where $m = \cos(\theta)$ and $n = \sin(\theta)$, and θ is the rotation around z -direction, which define the orientation of each lamina coordinate system with respect to the coordinate system of cracking lamina k .

The coefficients of thermal expansion in the coordinate system of lamina k can be evaluated by a coordinate transformation as:

$$\begin{Bmatrix} \bar{\alpha}_{x_1} \\ \bar{\alpha}_{x_2} \\ \bar{\alpha}_{x_1x_2}/2 \end{Bmatrix} = [T]^{-1} \begin{Bmatrix} \bar{\alpha}_1 \\ \bar{\alpha}_2 \\ 0 \end{Bmatrix} \quad (5)$$

The model is developed for plane elements, with no curvature, so that the following plate stiffness are obtained in the laminate coordinate system (X,Y,Z):

$$\begin{bmatrix} N_X \\ N_Y \\ N_{XY} \end{bmatrix} = \begin{bmatrix} \bar{A}_{11} & \bar{A}_{12} & \bar{A}_{16} \\ \bar{A}_{12} & \bar{A}_{22} & \bar{A}_{26} \\ \bar{A}_{16} & \bar{A}_{26} & \bar{A}_{66} \end{bmatrix} \begin{bmatrix} \varepsilon_X \\ \varepsilon_Y \\ \gamma_{XY} \end{bmatrix} - \begin{bmatrix} \bar{N}_X^T \\ \bar{N}_Y^T \\ \bar{N}_{XY}^T \end{bmatrix} \quad (6)$$

where ε_X , ε_Y and ε_{XY} are the laminate mid-surface strains, $\bar{N}_X^T, \bar{N}_Y^T, \bar{N}_{XY}^T$ are the thermal forces per unit length of classical lamination theory (CLT). The coefficients of the matrix $[\bar{A}]$ represent the laminate in-plane stiffnesses in the undamaged state and are given by:

$$A_{ij} = \sum_{n=1}^N (\bar{Q}_{ij}^{(n)}) (z_n - z_{n-1}) = \sum_{n=1}^N (\bar{Q}_{ij}^{(n)}) t^{(n)} \quad i, j = 1, 2, 6 \quad (7)$$

where it is understood that the coefficient matrices $(\bar{Q}_{ij}^{(n)})$ of each ply ``n'' are rotated to the proper coordinate system, in this case to the coordinate laminate system $(X_i, i=1,2,3)$. In eqn. (7) $t^{(n)}$ represents the thickness of n th layer. The compliance matrix of the plate is obtained inverting eqn. (6):

$$\begin{bmatrix} \varepsilon_X \\ \varepsilon_Y \\ \varepsilon_{XY} \end{bmatrix} = \begin{bmatrix} \bar{\alpha}_{11} & \bar{\alpha}_{12} & \bar{\alpha}_{16} \\ \bar{\alpha}_{12} & \bar{\alpha}_{22} & \bar{\alpha}_{26} \\ \bar{\alpha}_{16} & \bar{\alpha}_{26} & \bar{\alpha}_{66} \end{bmatrix} \begin{bmatrix} N_X + \bar{N}_X^T \\ N_Y + \bar{N}_Y^T \\ N_{XY} + \bar{N}_{XY}^T \end{bmatrix} \quad (8)$$

Finally from eqn. (8) the routine can evaluate the overall elastic properties of the undamaged laminate as:

$$\bar{E}_X = \frac{1}{t\bar{\alpha}_{11}}, \quad \bar{E}_Y = \frac{1}{t\bar{\alpha}_{22}}, \quad \bar{\nu}_{XY} = -\frac{\bar{\alpha}_{12}}{\bar{\alpha}_{11}} \quad \text{and} \quad \bar{G}_{XY} = \frac{1}{t\bar{\alpha}_{66}} \quad (9)$$

where t represents the laminate thickness.

2.2 LAMINATE REDUCED THERMOELASTIC PROPERTIES

In this second step, for each load step³, the routine is able to evaluate the damaged moduli. Damage in the form of cracks is analyzed as being discrete (not homogenized) with crack density $\lambda_k = l/2l$. Since the material between cracks is considered undamaged, then stiffness for the cracking layer k is calculated in terms of undamaged moduli. The constitutive equations of the cracked lamina k , with reference to the local coordinate system (1,2,3) of the same lamina, can be written in term of thickness averaged in-plane displacements and undamaged stiffness as follows:

$$\begin{aligned}\hat{\sigma}_1^{(k)} &= \bar{Q}_{11}^{(k)} (\hat{u}_{,1}^{(k)} - \bar{\alpha}_1^{(k)} \Delta T) + \bar{Q}_{12}^{(k)} (\hat{v}_{,2}^{(k)} - \bar{\alpha}_2^{(k)} \Delta T) \\ \hat{\sigma}_2^{(k)} &= \bar{Q}_{21}^{(k)} (\hat{u}_{,1}^{(k)} - \bar{\alpha}_1^{(k)} \Delta T) + \bar{Q}_{22}^{(k)} (\hat{v}_{,2}^{(k)} - \bar{\alpha}_2^{(k)} \Delta T) \\ \hat{\tau}_{12}^{(k)} &= \bar{Q}_{66}^{(k)} (\hat{u}_{,2}^{(k)} + \hat{v}_{,1}^{(k)})\end{aligned}\quad (10)$$

where the *overline* denotes undamaged quantities, *hat* denote a thickness averaged quantity, and $(\cdot)_{,1}$ and $(\cdot)_{,2}$ represent partial derivatives respect to the x_1 and x_2 directions respectively (x_1 and x_2 are the in-plane coordinates aligned and perpendicular to the fiber of lamina k). The constitutive equations (10) are written according to the model for cracked laminates [3, 26], considering the perturbation in the displacement field induced by the presence of cracks, and taking into account that that the displacements $\hat{u}_1^{(k)}, \hat{u}_2^{(k)}$ are functions of the (x_1, x_2) position inside of RVE in Figure 1). During the laminate loop, the remaining laminae have reduced properties that can be calculated in terms of the damage variables $D_{22}^{(m)}(\lambda_m), D_{12}^{(m)}(\lambda_m), D_{66}^{(m)}(\lambda_m)$ (for stiffness reduction) and $D_{11}^{\alpha(m)}(\lambda_m), D_{22}^{\alpha(m)}(\lambda_m)$ (for CTE reduction), with $m \neq k$. Therefore, the constitutive equations of any homogenized lamina $m \neq k$ can be written in the coordinate system of lamina k as:

³ which may be applied as a strain step

$$\begin{aligned}
 \hat{\sigma}_{x_1}^{(m)} &= Q_{11}^{(m)} (\hat{u}_{,1}^{(m)} - \alpha_{x_1}^{(m)} \Delta T) + Q_{12}^{(m)} (\hat{v}_{,2}^{(m)} - \alpha_{x_2}^{(m)} \Delta T) + Q_{16}^{(m)} (\hat{u}_{,2}^{(m)} + \hat{v}_{,1}^{(m)} - \alpha_{x_1 x_2}^{(m)} \Delta T) \\
 \hat{\sigma}_{x_2}^{(m)} &= Q_{12}^{(m)} (\hat{u}_{,1}^{(m)} - \alpha_{x_1}^{(m)} \Delta T) + Q_{22}^{(m)} (\hat{v}_{,2}^{(m)} - \alpha_{x_2}^{(m)} \Delta T) + Q_{26}^{(m)} (\hat{u}_{,2}^{(m)} + \hat{v}_{,1}^{(m)} - \alpha_{x_1 x_2}^{(m)} \Delta T) \\
 \hat{\tau}_{x_1 x_2}^{(m)} &= Q_{16}^{(m)} (\hat{u}_{,1}^{(m)} - \alpha_{x_1}^{(m)} \Delta T) + Q_{26}^{(m)} (\hat{v}_{,2}^{(m)} - \alpha_{x_2}^{(m)} \Delta T) + Q_{66}^{(m)} (\hat{u}_{,2}^{(m)} + \hat{v}_{,1}^{(m)} - \alpha_{x_1 x_2}^{(m)} \Delta T)
 \end{aligned} \tag{11}$$

Note that stiffnesses, compliances and CTE without an overline denote damaged quantities. Also note that in eqn. (10) $\sigma_1 = \sigma_{x_1}$, $\sigma_2 = \sigma_{x_2}$, $\tau_{12} = \tau_{x_1 x_2}$ because eqn. (10) and (11) are both set up in the lamina coordinate system of lamina k . The damaged thermoelastic properties of ply (m), $Q^{(m)}$ and $\alpha^{(m)}$, can be written in the coordinate system of lamina m as:

$$Q^{(m)} = \begin{bmatrix} \bar{Q}_{11}^{(m)} & \bar{Q}_{12}^{(m)}(1-D_{12}^{(m)}) & 0 \\ \bar{Q}_{21}^{(m)}(1-D_{12}^{(m)}) & \bar{Q}_{22}^{(m)}(1-D_{22}^{(m)}) & 0 \\ 0 & 0 & \bar{Q}_{66}^{(m)}(1-D_{66}^{(m)}) \end{bmatrix}, \quad \alpha^{(m)} = \begin{Bmatrix} \bar{\alpha}_1^{(m)}(1-D_1^{\alpha(m)}) \\ \bar{\alpha}_2^{(m)}(1-D_2^{\alpha(m)}) \\ 0 \end{Bmatrix} \tag{12}$$

where k and m are the labels for the cracking lamina and the remaining homogenized laminae respectively, $D_{ij}^{(m)}(\lambda_m)$ ($i, j=1, 2, 6$) and $D_i^{\alpha(m)}(\lambda_m)$ ($i=1, 2$) are variables which represent the in-plane stiffness and CTE reduction of the laminae. The constitutive equations for out-of-plane shear strains and stresses can be expressed in terms of interface shear stresses and averaged displacements by taking a weighted average of these equations. These equations are called *shear lag* equations [23]. The shear lag equation used in this paper is developed in Barbero et al. [25,26].

To obtain the laminate compliance matrix $[S]$ of the cracked composite laminate, three unit-load cases, without thermal strains, are considered:

$$\begin{Bmatrix} \hat{\sigma}_{x_1} \\ \hat{\sigma}_{x_2} \\ \hat{\tau}_{x_1 x_2} \end{Bmatrix}^{(a)} = \begin{bmatrix} 1 \\ 0 \\ 0 \end{bmatrix}; \quad \begin{Bmatrix} \hat{\sigma}_{x_1} \\ \hat{\sigma}_{x_2} \\ \hat{\tau}_{x_1 x_2} \end{Bmatrix}^{(b)} = \begin{bmatrix} 0 \\ 1 \\ 0 \end{bmatrix}; \quad \begin{Bmatrix} \hat{\sigma}_{x_1} \\ \hat{\sigma}_{x_2} \\ \hat{\tau}_{x_1 x_2} \end{Bmatrix}^{(c)} = \begin{bmatrix} 0 \\ 0 \\ 1 \end{bmatrix} \tag{13}$$

and the deformations obtained for each case are the components of $[S]$ in the material coordinate system of the cracking lamina, as follow:

$$[S] = \left[\begin{array}{c} \left\{ \begin{array}{c} \hat{\epsilon}_{x_1} \\ \hat{\epsilon}_{x_2} \\ \hat{\gamma}_{x_1x_2} \end{array} \right\}^{(a)} \\ \left\{ \begin{array}{c} \hat{\epsilon}_{x_1} \\ \hat{\epsilon}_{x_2} \\ \hat{\gamma}_{x_1x_2} \end{array} \right\}^{(b)} \\ \left\{ \begin{array}{c} \hat{\epsilon}_{x_1} \\ \hat{\epsilon}_{x_2} \\ \hat{\gamma}_{x_1x_2} \end{array} \right\}^{(c)} \end{array} \right] \quad (14)$$

The laminate compliance matrix $[S]$ in the global coordinate system is obtained using the coordinate transformation eqn. (3). Then, the overall elastic properties for the laminate can be written as:

$$E_X = \frac{1}{S_{11}}, \quad E_Y = \frac{1}{S_{22}}, \quad \nu_{XY} = -\frac{S_{12}}{S_{11}} \quad \text{and} \quad G_{XY} = \frac{1}{S_{33}} \quad (15)$$

Similarly, the coefficients of thermal expansion for the damaged laminate can be obtained calculating the deformation for a unitary change of the temperature ($\Delta T = 1$) and external loading equal to zero ($\hat{\sigma}_{x_1} = \hat{\sigma}_{x_2} = \hat{\tau}_{x_1x_2} = 0$):

$$\left\{ \begin{array}{c} \alpha_{x_1} \\ \alpha_{x_2} \\ \alpha_{x_1x_2} \end{array} \right\} = \left\{ \begin{array}{c} \hat{\epsilon}_{x_1} \\ \hat{\epsilon}_{x_2} \\ \hat{\gamma}_{x_1x_2} \end{array} \right\} \quad (16)$$

The coefficients of thermal expansion of the laminate in the laminate coordinate system can be calculated by a coordinate transformation as:

$$\left\{ \begin{array}{c} \alpha_X \\ \alpha_Y \\ \alpha_{XY} / 2 \end{array} \right\} = [T]^{-1} \left\{ \begin{array}{c} \alpha_{x_1} \\ \alpha_{x_2} \\ \alpha_{x_1x_2} / 2 \end{array} \right\} \quad (17)$$

It is very important to note that the proposed procedure is able to evaluate the stiffness of the damaged laminate as a function of the crack density of the damaged laminae (λ_k) and

the virgin elastic properties of the laminae. There is no need for defining damage evolution functions in terms of additional parameters, and thus no need to adjust such parameters using additional experimental data. It only remains to calculate the values of λ_k , as described in Section 3.

2.3 LAMINA REDUCED THERMOELASTIC PROPERTIES

The damage parameters $D_{ij}^{(k)}(\lambda_k)$ and $D_i^{\alpha(k)}(\lambda_k)$ for lamina k can be calculated considering the reduction of the laminate thermoelastic properties (stiffness and CTE) due to matrix cracking in the lamina k only.

First, the undamaged stiffness matrix of the laminate \bar{Q} in the coordinate system of lamina k is calculated by the sum of contribution of the cracking lamina k plus the contribution of the remaining $n-1$ laminae as follows:

$$\bar{Q} = \bar{Q}^{(k)} \frac{t^{(k)}}{t} + \sum_{m=1}^n \bar{Q}^{(m)} \frac{t^{(m)}}{t} (1 - \delta_{mk}) \quad (18)$$

where $\bar{Q}^{(k)}$ is the undamaged stiffness matrix the lamina k (in the coordinate system of the lamina k), $\bar{Q}^{(m)}$ are the undamaged stiffness matrices also (in the coordinate system of lamina k) of the laminae $m \neq k$ (all plies in their undamaged state), t is the laminate thickness, $t^{(k)}$ is individual lamina thickness, and δ_{mk} is the Kronecker symbol with $\delta_{kk} = 1$, zero otherwise. When the crack density grows in individual plies, the laminate thermoelastic properties are accordingly reduced to:

$$Q = Q^{(k)} \frac{t^{(k)}}{t} + \sum_{m=1}^n Q^{(m)} \frac{t^{(m)}}{t} (1 - \delta_{mk}) \quad (19)$$

where the damaged laminate stiffness $Q = S^{-1}$ can be computed from eqn. (14), and the damaged laminae stiffness $Q^{(m)}$ are given by eqn.(12).

Then, the reduced stiffness matrix of the k -lamina, due to damage growth in lamina k , $Q^{(k)}$ can be evaluated from eqn. (19) as

$$Q^{(k)} = \frac{1}{t^{(k)}} \left[Q \cdot t - \sum_{m=1}^n Q^{(m)} \cdot t^{(m)} \cdot (1 - \delta_{mk}) \right]$$

Finally, the damage variables for $D_{ij}^{(k)}$ stiffness reduction of ply k are calculated as

$$D_{ij}^{(k)}(\lambda_k) = 1 - Q_{ij}^{(k)} / \bar{Q}_{ij}^{(k)} \quad , \quad i, j = 1, 2, 6 \quad (20)$$

A similar procedure is followed to calculate the damage variables for reduction in CTE of lamina k , $D_i^{\alpha(k)}$. Thus, by applying CLT, the reduced CTE of the k -lamina due to damage growth in lamina k can be evaluated as

$$\alpha^{(k)} = \frac{1}{t^{(k)}} \cdot (Q^{(k)})^{-1} \cdot \left[t \cdot Q \cdot \alpha - \sum_{m=1}^n t^{(m)} \cdot Q^{(m)} \cdot \alpha^{(m)} \cdot (1 - \delta_{mk}) \right] \quad (21)$$

where the damaged laminate CTE α is computed from (16), and the damaged laminae CTEs $\alpha^{(m)}$ are given by eqn. (12).

The coefficients $D_i^{\alpha(k)}$ for the cracking lamina k are calculated as

$$D_i^{\alpha(k)} = 1 - \alpha_i^{(k)} / \bar{\alpha}_i^{(k)} \quad , \quad i = 1, 2 \quad (22)$$

To evaluate the reduction in thermoelastic properties of the cracking lamina k , the other laminae of the laminate are considered undamaging during the course of lamina-iterations in lamina k , but with damaged properties calculated according to the current value of their damage variables $D_{ij}^{(m)}$, $D_i^{\alpha(m)}$.

2.4 DAMAGE ACTIVATION FUNCTION

Under displacement control, the energy release rate of new crack formation for mode I and II are:

$$G_I = -\frac{\partial U_I}{\partial A} \quad , \quad G_{II} = -\frac{\partial U_{II}}{\partial A} \quad (23)$$

where U_I and U_{II} are the strain energy for mode I and mode II, respectively, and A is the crack area. Equation (23) describes Griffith's energy balance for infinitesimal crack growth ∂A of brittle materials. According with experimental observations on laminated composites based on brittle matrix (e.g. for most toughened epoxy matrices), crack growth is not infinitesimal but cracks develop suddenly over a finite length [33,34,35]. Even for laminates where cracks do not grow to span the width of the specimen, cracks still grow suddenly at first and occupying large areas of the specimen and the concept of crack density, as used in this manuscript, can still be applied [36]. Therefore, Griffith's energy principle is applied on its discrete (finite) form, in order to describe the discrete (finite) behavior of crack propagation observed experimentally, i.e.,

$$G_I = -\frac{\Delta U_I}{\Delta A} \quad , \quad G_{II} = -\frac{\Delta U_{II}}{\Delta A} \quad (24)$$

where $\Delta U_I, \Delta U_{II}$ is the change in laminate strain energy during mode I and II finite crack growth, and ΔA is the new finite crack area.

An important aspect in any analysis of laminated composites is to consider the effect of residual thermal stresses, which are inherent to these materials due to ΔT difference between the laminate processing temperature and structure operating temperature, coupled with the difference in CTE between in individual plies caused by plies different orientation angles. Thus, starting from the definition of strain energy as $U = \frac{1}{2} \int_V \{\varepsilon\} \cdot \{\sigma\} dV$ for the

RVE (Figure 1), the laminate strain energy can be derived considering the contribution of

ply residual thermal stresses and the self-balanced nature of ply thermal stresses at laminate level. Therefore, the contribution of mechanical loading and temperature change can be written as:

$$U_{RVE} = \frac{V_{RVE}}{2} (U_1 - U_2 + U_3) \quad (25)$$

with

$$U_1 = \varepsilon \cdot Q \cdot \varepsilon \quad , \quad U_2 = \alpha \cdot Q \cdot \alpha \cdot \Delta T^2 \quad , \quad U_3 = \frac{1}{t} \cdot \sum_{n=1}^N t^{(n)} \cdot \alpha^{(n)} \cdot Q^{(n)} \cdot \alpha^{(n)} \cdot \Delta T^2 \quad (26)$$

where V_{RVE} is the volume of RVE in Figure 1; ε is the vector applied (mechanical) in-plane laminate strain in the displacement control case; Q and α are the overall laminate thermoelastic properties given by eqn. (14), (16) respectively; $Q^{(n)}$ and $\alpha^{(n)}$ are thermoelastic properties of individual plies given by eqn. (12). In equations (25), (26), the term U_1 represents the contribution of mechanical loading, and the terms U_2 , U_3 represent the contribution of thermal residual stress, both contributing to the total laminate strain energy.

In order to calculate the strain energy release rate for separate I and II modes, the deformation is partitioned in I and II modes, and the resulting I and II modes strain energy in eqn. (25) can be written in the coordinate system of ply k as:

$$\begin{aligned} U_I = & \varepsilon_{x_1} \left(Q_{11} \varepsilon_{x_1} + Q_{12} \varepsilon_{x_2} + Q_{16} \gamma_{x_1 x_2} \right) + \varepsilon_{x_2} \left(Q_{21} \varepsilon_{x_1} + Q_{22} \varepsilon_{x_2} + Q_{26} \gamma_{x_1 x_2} \right) - \\ & - \Delta T^2 \left[\alpha_{x_1} \left(Q_{11} \alpha_{x_1} + Q_{12} \alpha_{x_2} + Q_{16} \alpha_{x_1 x_2} \right) + \alpha_{x_2} \left(Q_{21} \alpha_{x_1} + Q_{22} \alpha_{x_2} + Q_{26} \alpha_{x_1 x_2} \right) \right] + \\ & + \frac{\Delta T^2}{t} \sum_{n=1}^N t^{(n)} \left[\alpha_{x_1}^{(n)} \left(Q_{11}^{(n)} \alpha_{x_1}^{(n)} + Q_{12}^{(n)} \alpha_{x_2}^{(n)} + Q_{16}^{(n)} \alpha_{x_1 x_2}^{(n)} \right) + \alpha_{x_2}^{(n)} \left(Q_{21}^{(n)} \alpha_{x_1}^{(n)} + Q_{22}^{(n)} \alpha_{x_2}^{(n)} + Q_{26}^{(n)} \alpha_{x_1 x_2}^{(n)} \right) \right] \end{aligned} \quad (27)$$

$$\begin{aligned} U_{II} = & \gamma_{x_1 x_2} \left(Q_{61} \varepsilon_{x_1} + Q_{62} \varepsilon_{x_2} + Q_{66} \gamma_{x_1 x_2} \right) - \\ & - \Delta T^2 \alpha_{x_1 x_2} \left(Q_{61} \alpha_{x_1} + Q_{62} \alpha_{x_2} + Q_{66} \alpha_{x_1 x_2} \right) + \\ & + \frac{\Delta T^2}{t} \sum_{n=1}^N t^{(n)} \alpha_{x_1 x_2}^{(n)} \left(Q_{61}^{(n)} \alpha_{x_1}^{(n)} + Q_{62}^{(n)} \alpha_{x_2}^{(n)} + Q_{66}^{(n)} \alpha_{x_1 x_2}^{(n)} \right) \end{aligned} \quad (28)$$

The failure criteria proposed by Hahn [37] is used in this study, but written in the form of damage activation function (see Chapter 8 in [1]):

$$g_k(\lambda) = (1-r) \sqrt{\frac{G_I}{G_{IC}}} + r \frac{G_I}{G_{IC}} + \frac{G_{II}}{G_{IIC}} - 1 \leq 0 \quad (29)$$

where $r = G_{IC}/G_{IIC}$ and G_{IC} and G_{IIC} are the critical values of the ERR for mode I and II.

3 NUMERICAL ALGORITHM

The proposed algorithm is described in this section and implemented into an user material subroutine in ANSYS. The only state variables of the routine are the crack densities for all laminae. The algorithm consists of the following steps:

- Strain steps;
- Laminate iterations;
- Lamina iterations (see Section 2.2 and 2.3);

For each load (strain) step, the strain on the laminate is increased and the laminae are checked for transverse tension and/or shear damage mode by evaluating the damage activation function eqn. (29). Details about the numerical implementation steps are listed in the following sections.

3.1 LAMINA ITERATION

During the loop for a given lamina k , and for fixed a strain level, when matrix cracking is detected, a return mapping algorithm (RMA) is invoked to iterate and modify the crack density λ_k . The RMA calculates the increment (decrement) of crack density as

$$\Delta\lambda_k = -g_k / \frac{\partial g_k}{\partial \lambda_k} \quad (30)$$

until $g_k = 0$ (eqn. (29)) is satisfied for a given tolerance. This procedure, for each strain level, is repeated for all the laminae in the laminate. The analysis starts with a negligible value for the crack density ($\lambda=0.02$ cracks/mm).

3.2 LAMINATE ITERATION

To evaluate the stiffness reduction of the cracked lamina (k -lamina), all of the other laminae (m -laminae) in the laminate are considered not damaging during the course of lamina-iteration, but with damaged properties calculated according to the current value of their damage variables $D_{ij}^{(k)}$. Given a trial value of λ_k for the cracked lamina, the model provides g , $D_{ij}^{(k)}$, for lamina k assuming all other laminae do not damage while performing lamina iterations in lamina k . Since the solution in lamina k depends on the stiffness of the remaining laminae, a converged iteration for lamina k does not guarantee convergence for the same lamina once the damage in the remaining laminae are updated, unless the remaining laminae remain undamaged. This can be realized by laminate-iterations; that is, to loop over all laminae repeatedly until all laminae converge to $g_k=0$ for all $k = 1 \dots n$.

4 STRAIN-BASED ALGORITHM OBJECTIVITY

When a constitutive formulation is discretized, such as in a finite element code, errors may occur in the solution due to problems associated to strain localization and mesh dependence. These problems limit the accuracy depending on the mesh refinement.

The damage activation function must be written in terms of the fracture energy per unit area G so that the later can be compared to the critical energy release rate G_c . In the proposed formulation, the fracture energy per unit area G_I and G_{II} are evaluated analytically (eqn. (24)) with no need to introduce a characteristic length. This is because the present formulation analyzes a discrete crack inside the RVE of dimension $2l=l/\lambda$, not a crack smeared over the volume of the element. This is in contrast to other formulations that first evaluate the energy per unit volume g_v , then need to define a characteristic length l_c to calculate the fracture energy per unit area $G = g_v \cdot l_c$. Calculation of the characteristic

length is problematic because it depends on mesh size and the particular formulation used [38, 39, 40].

Numerical tests have been carried out to evaluate the objectivity of the model using a 100 x 100 mm² plate with a [0/90₈/0]_s LSS and material properties given in Table 1. The model is subjected to an imposed displacement Δ in the X-direction equal to $10/L$, where L is the dimension of the plate. The plate was discretized with three different meshes shown in Figure 3.

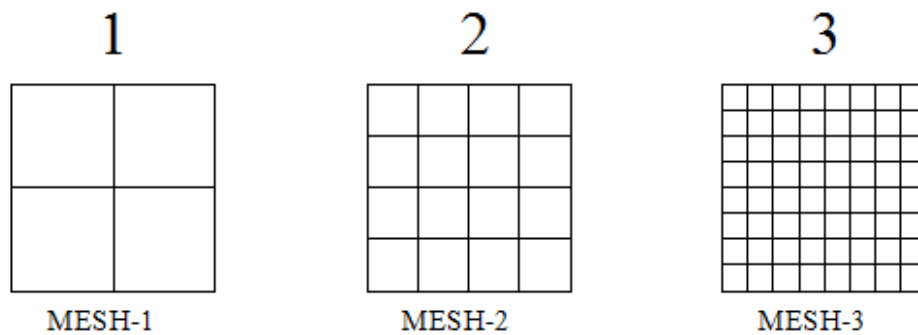


Figure 3. Mesh used in the mesh sensitivity study.

The stress-strain responses for each of the three mesh size used are shown in Figure 4a. Algorithms that are mesh sensitive may and usually show no discrepancy among the stress-strain curves. Instead, mesh sensitivity is noticed in the structural force-displacement response. The structural response obtained using the three different meshes are compared in Figure 4b. According to Figure 4b, the global response of the structure is insensitive to the mesh used. This means that the energy dissipated in the formation of the crack is mesh insensitive.

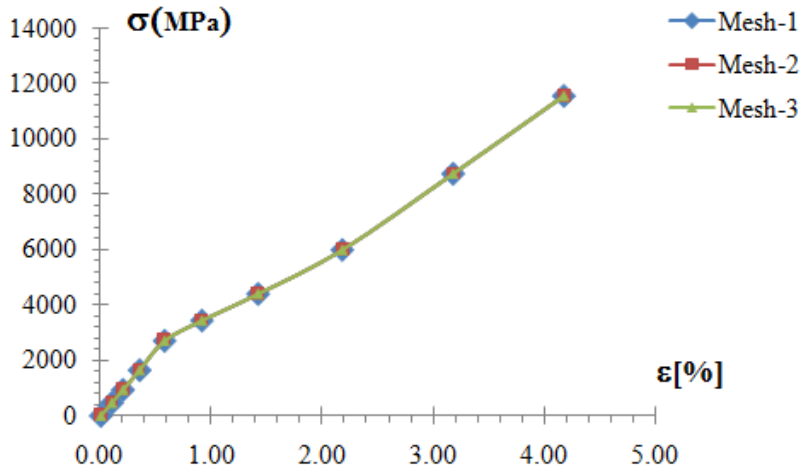


Figure 4a Effect of mesh refinement on stress-strain response for the laminate.

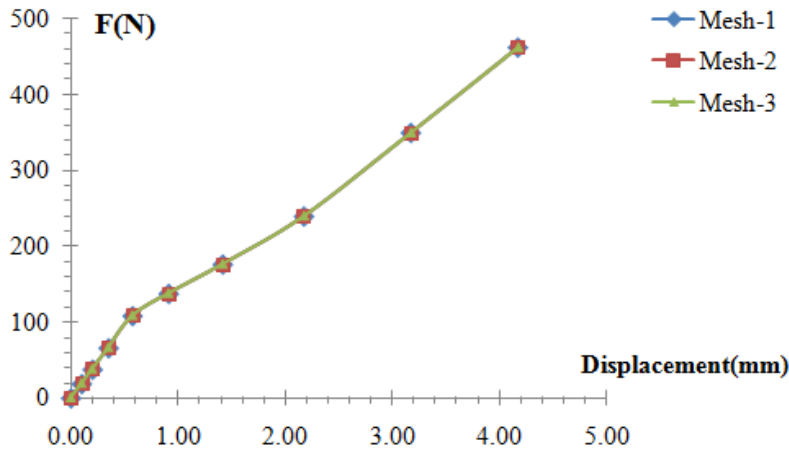


Figure 4b Effect of mesh refinement on structural response for the laminate.

5 NUMERICAL RESULTS

In this section, results obtained by the Discrete Damage Mechanics (DDM) model developed are presented and the results are compared with experimental data reported in literature [2,41]. The properties of the material used for these tests are presented in Table 1. Several laminate stacking sequence (LSS) are used to validate the code.

The first test presented is a cross-ply laminate $[0/90_8/0_{1/2}]_S$. This is a classical example of transverse matrix cracking where the cracks open in pure mode I. Since the experimental data was obtained at room temperature, using a stress free temperature (SFT) equal to 120°C . Therefore, the numerical test is performed with $\Delta T = -99^\circ\text{C}$. The stress-strain response for the 90° layer is shown in Figure 5. It can be seen in Figure 6 that the DDM model predicts very well the strain required for crack initiation, as well as the evolution of crack density (for the 90° layer) when compared with experimental data.

MATERIAL PROPERTIES		
E1 (GPa)	44.7	[2]
E2 (GPa)	12.7	[2]
ν_{12}	0.297	[2]
G12 (GPa)	5.8	[2]
G23 (GPa)	4.5	*
Ply thickness(mm)	0.144	[2]
G _{Ic} (kJ/m ²)	0.36	
G _{IIc} (kJ/m ²)	1.4	
α_1 (1/ ^o C)	8.42E-06	[41]
α_2 (1/ ^o C)	1.84E-05	[41]
ΔT (^o C)	-99	[41]

* ASSUMED VALUE

Table 1. Material properties

The degradation of the laminate modulus and degradation of Poisson’s ratio are compared to experimental data in Figure 7-8. Note that \bar{E}_x , $\bar{\nu}_{xy}$ are the undamaged laminate modulus and Poisson’s ratio, respectively. The results plotted as a function of the crack density compare very well with experimental data.

Comparison between the strain required for crack initiation and evolution with and without thermal expansion shows that the presence of thermal expansion does not give a lot of influence in the strain required for crack initiation and evolution of crack density. The present formulation requires only the properties listed in Table 1, without need for

experimental parameters for damage evolution equations and no need to set the characteristic length of the problem.

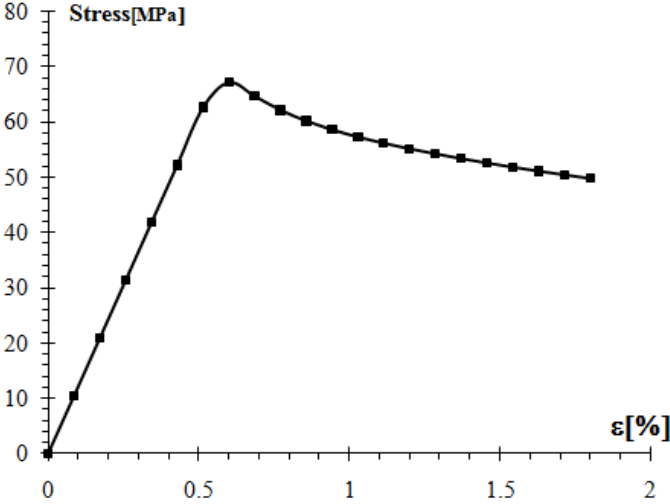


Figure 5. Stress-strain (σ_2, ϵ_x) response for the layer 90° layer of a $[0/90_8/0_{1/2}]_s$ laminate.

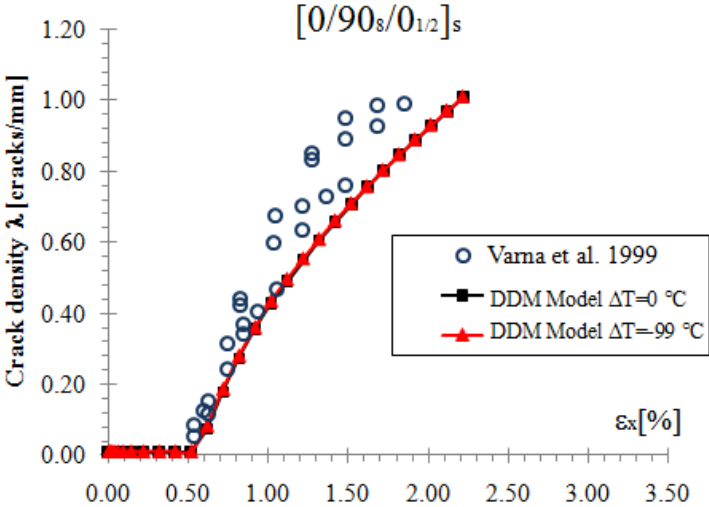


Figure 6. Crack density vs. applied strain for a $[0/90_8/0_{1/2}]_s$ laminate.

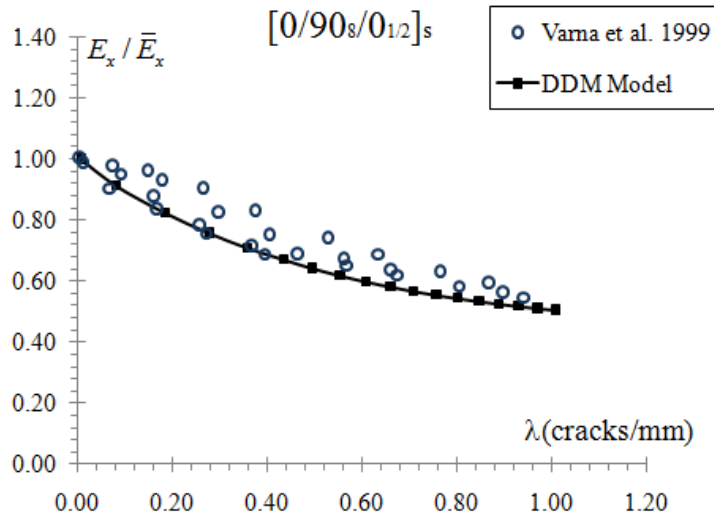


Figure 7. Prediction of laminate modulus E_x / \bar{E}_x vs. crack density for a $[0/90_8/0_{1/2}]_s$ laminate.

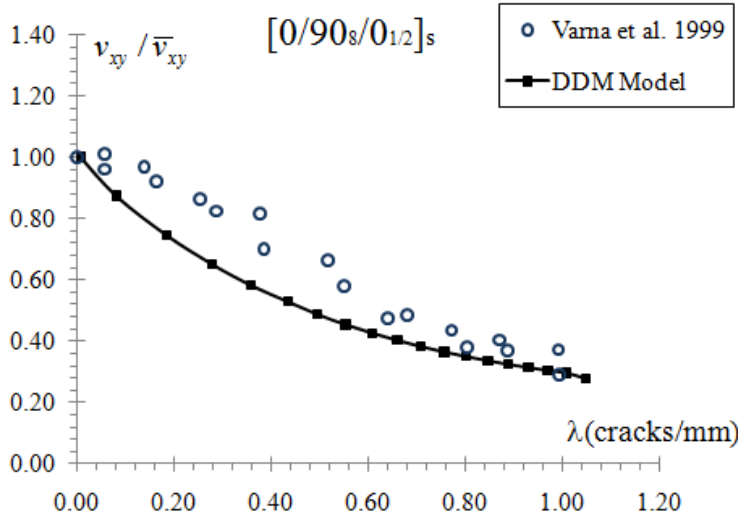


Figure 8. Prediction of laminate modulus v_{xy} / \bar{v}_{xy} vs. crack density for a $[0/90_8/0_{1/2}]_s$ laminate.

The second test proposed is a $[0/55_4/-55_4/0_{1/2}]_s$ laminate when the cracks are subjected to both mode I and mode II with more predominance of mode II. Also for this test results are presented with and without thermal expansion. The strain required for crack initiation and evolution is shown in Figure 9. The prediction is very good compared with the two set of experimental data presented in [2].

The prediction of Young's modulus E_x / \bar{E}_x shown in Figure 10 is good compared with experimental data. The prediction of Poisson's ratio $\nu_{xy} / \bar{\nu}_{xy}$ shown in Figure 11 does not match the experimental data, but also in [3] the authors reported an increase of Poisson's ratio for $[\pm\theta]_s$ laminates for values of θ lower than 60° .

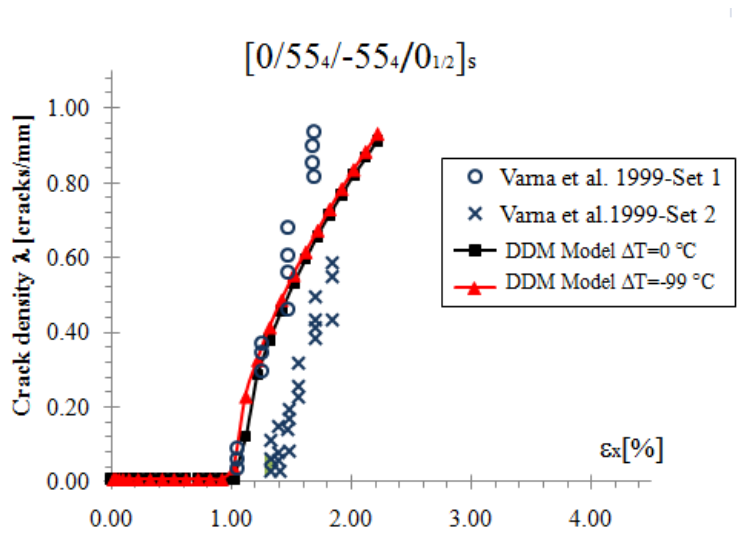


Figure 9. Crack density vs. applied strain for a $[0/+55_4/-55_4/0_{1/2}]_s$ laminate.

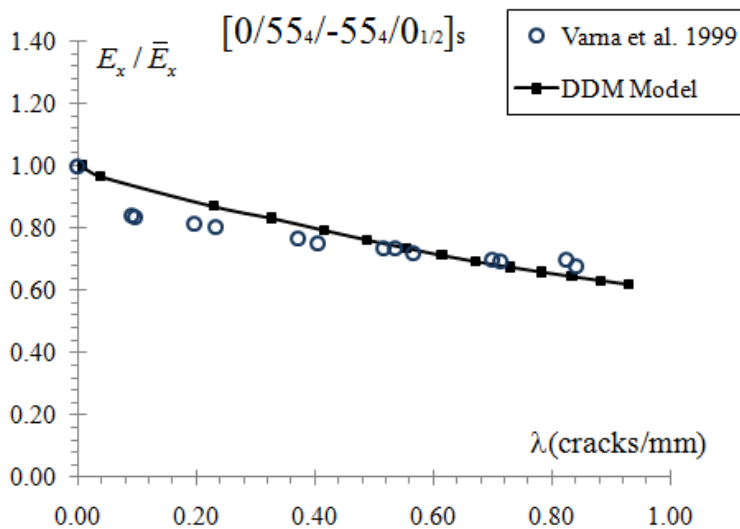


Figure 10. Prediction of laminate modulus E_x / \bar{E}_x vs. crack density for a $[0/+55_4/-55_4/0_{1/2}]_s$ laminate.

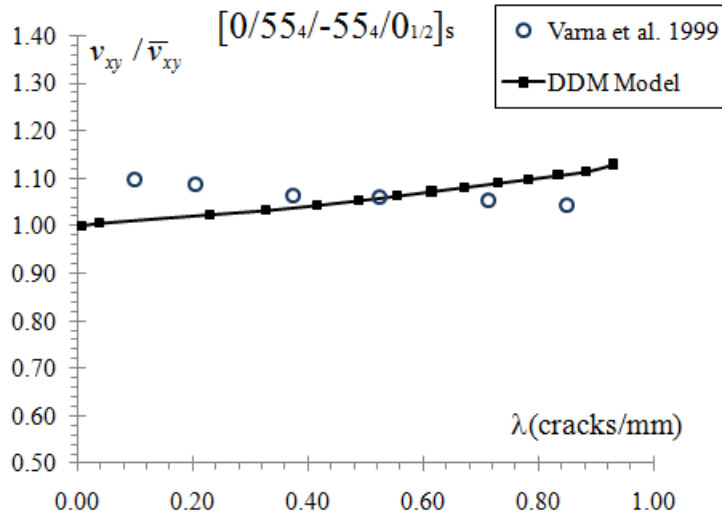


Figure 11. Prediction of laminate modulus v_{xy} / \bar{v}_{xy} vs. crack density for a $[0/+55_4/-55_4/0_{1/2}]_s$ laminate.

Damage evolution for a $[0_2/90_4]_s$ laminate without and with thermal expansion is shown in Figure 12. Prediction of Young's modulus E_x / \bar{E}_x and Poisson's ratio v_{xy} / \bar{v}_{xy} are shown in Figure 13-14. The DDM results provide a good approximation to experimental data presented in [41]. Another test carried out is $[30_-/30_+/90_4]_s$ laminate, with results shown in Figure 15-16-17. It can be seen that the model predicts experimental data [41] accurately.

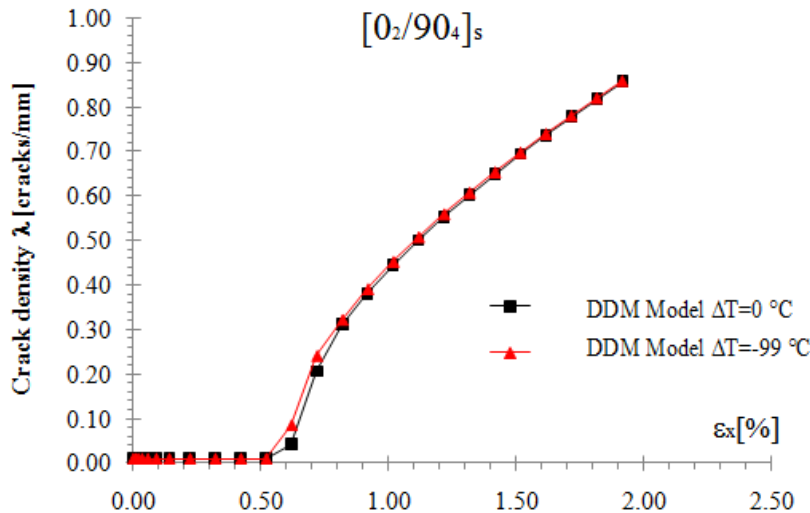


Figure 12. Crack density vs. applied strain for a $[0_2/90_4]_s$ laminate with and without thermal expansion.

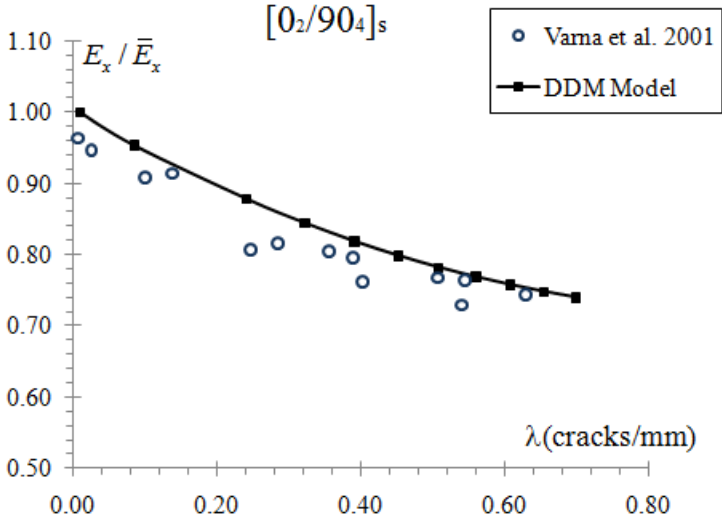


Figure 13. Prediction of laminate modulus E_x / \bar{E}_x vs. crack density for a $[0_2/90_4]_s$ laminate.

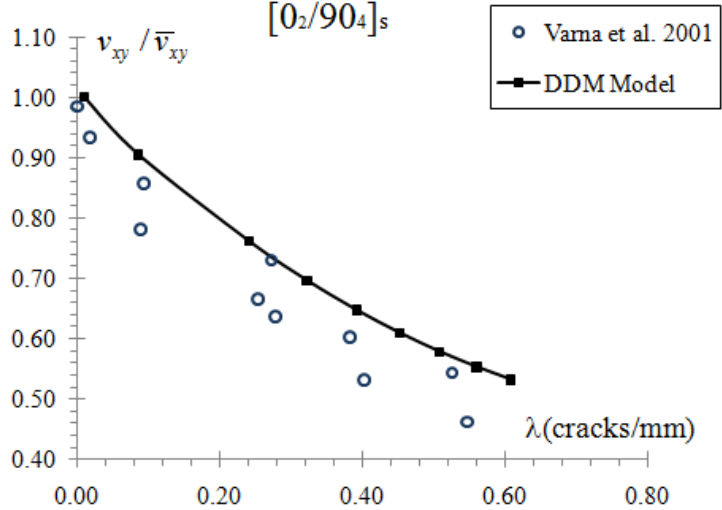


Figure 14. Prediction of laminate modulus $\nu_{xy} / \bar{\nu}_{xy}$ vs. crack density for a $[0_2/90_4]_s$ laminate.

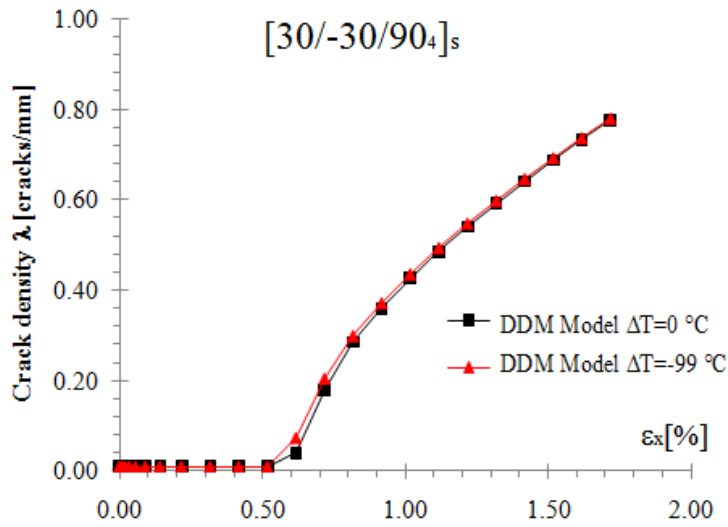


Figure 15. Crack density vs. applied strain for a $[30/-30/90_4]_s$ laminate with and without thermal expansion.

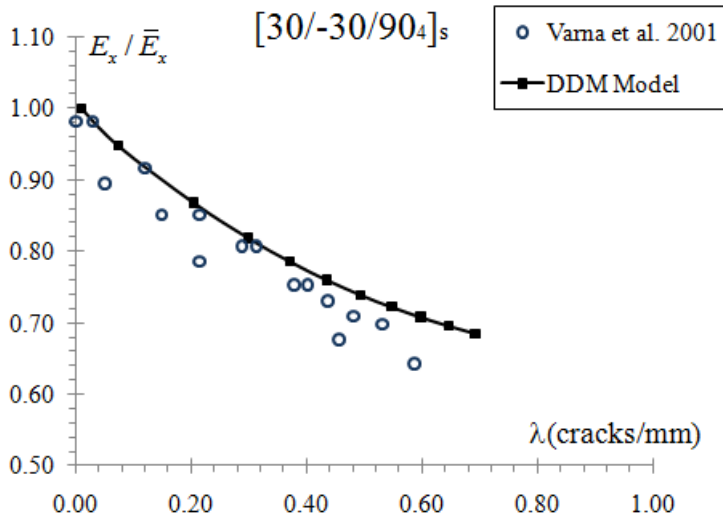


Figure 16. Prediction of laminate modulus E_x / \bar{E}_x vs. crack density for a $[30/-30/90_4]_s$ laminate.

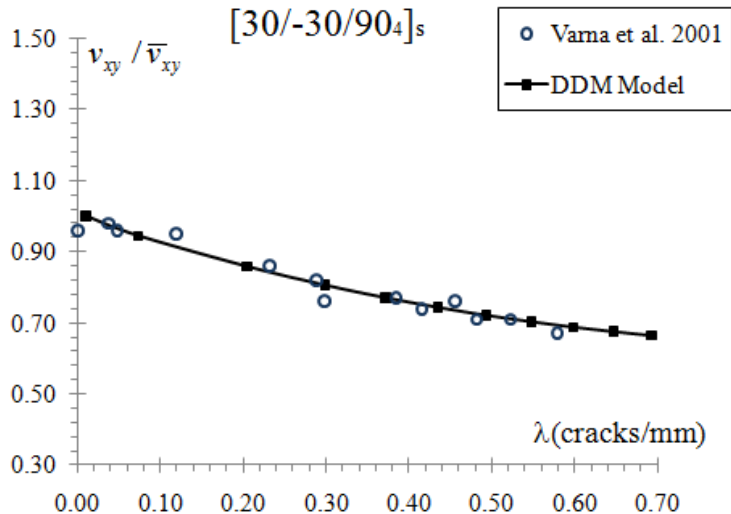


Figure 17. Prediction of laminate modulus v_{xy} / \bar{v}_{xy} vs. crack density for a $[30/-30/90_4]_s$ laminate.

To demonstrate the versatility of the proposed formulation, contour plots of crack density around a hole in the 90° layer of a $[30/-30/90_4]_s$ laminate are shown at two load steps in Figures 18-19. The values of the state variable (crack density) are retrieved with standard ANSYS post processing and plotted within ANSYS.

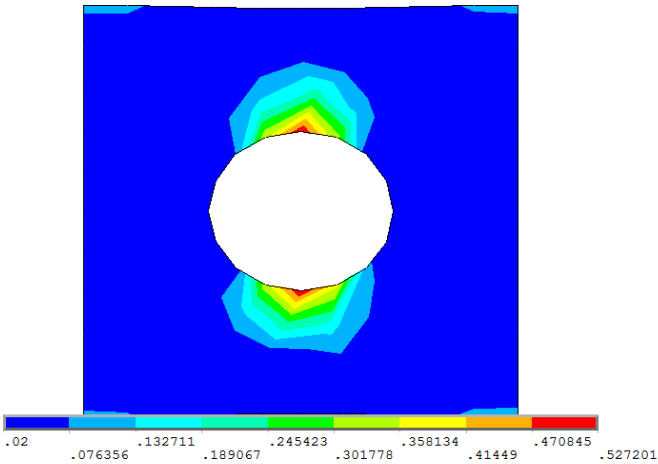


Figure 18. Contour plot of the crack density (first load step) in the 90° -lamina for a $[30/-30/90_4]_s$ laminate under uniaxial load.

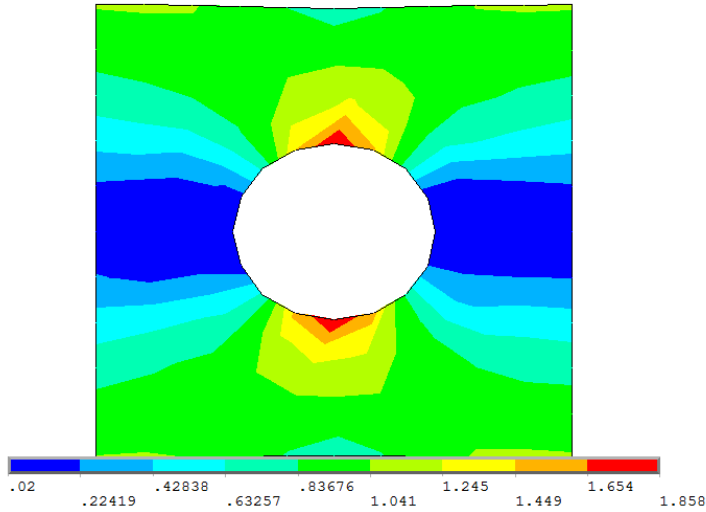


Figure 19. Contour plot of the crack density (second load step) in the 90-lamina for a [30/-30/90₄]_s laminate under uniaxial load.

6 CONCLUSIONS

It has been shown that the constitutive model developed is not afflicted by problems of mesh dependence on the solution. It is not necessary to introduce fictitious parameters such as characteristic length when the continuum formulation is discretized in a finite element code. The tests presented for various symmetric laminates with arbitrary LSS show good predictions in comparison with experimental data. Implementation as a user material subroutine in the commercial software ANSYS have been demonstrated. Therefore, the model is able to gain widespread use and applicability.

REFERENCES

1. Barbero, E. J., *Finite element Analysis of Composite Materials*, 2007, Taylor & Francis, Boca Raton, FL.
2. Varna, J., Joffe, R., Akshantala, N. V., and Talreja, R., *Damage in Composite Laminates with Off-Axis Plies*, *Composite Science and Technology* 59 (1999) 2139-2147.
3. Yokozeki, T., Aoki, T., and Ishikawa, T., *Consecutive Matrix Cracking in Contiguous Plies of Composite Laminates*, *International Journal of Solids and Structures*, 42 (2005) 2785-2802.
4. Yokozeki, T., Aoki, T., Ogasawara, T., and Ishikawa, T., *Effects of layup angle and ply thickness on matrix crack interaction in contiguous plies of composite laminates*, *Composites Part A: Applied Science and Manufacturing*, 36 (2005) 1229-1235.
5. Chang, Fu-Kuo and Lessard, L. B., *Damage tolerance of laminated composites containing a hole and subjected to compressive loadings, Part I—Analysis*, *Journal of Composite Materials* Vol 25, pp. 2—43, 1991.
6. Wang, J. and Karihaloo, B. L., *Optimum in situ strength design of composite laminates. Journal of Composite Materials, Part I—In situ Strength Parameters*, Vol 30, 1314—1337, 1995.
7. Davila, C. G., Camanho, P. P., Rose, C. A. , *Failure criteria for FRP laminates. Journal of Composite Materials* 39 (2005) 323-345.
8. Camanho, P. P., Davila, C. G., Pinho S., Iannucci, L., Robinson, P., *Prediction of in situ strengths and matrix cracking in composites under tension and in-plane shear. Composites Part A: Applied Science and Manufacturing* ,37 (2006) 165-176.
9. Kachanov, L., *Time of rupture process under creep conditions*, *Izy Akad Nank S.S:R. Otd Tech Nauk* 8,pp. 26-31, 1958.
10. Rabotnov, Y., *Creep Rupture*, *Proc XII Int. Cong. Appl. Mech.*, 1968.
11. Barbero, E. J. and DeVivo, L., *A constitutive model for elastic damage in fiber-reinforced PMC laminae*, *Journal of Damage Mechanics*, 10 (2001) 73-93.
12. Barbero, E. J. and Lonetti, P., *Damage model for composites defined in terms of available data*, *Mechanics of Composite Materials and Structures*, 8 (2001) 299-316.
13. Barbero, E. J. and Lonetti, P., *An inelastic damage model for fiber reinforced laminates. Journal of Composite Materials* 36 (2002) 941-962.
14. Lonetti, P., Barbero, E. J., Zinno, and R., Greco, F., *Interlaminar damage model for polymer matrix composites. Journal of Composite Materials*, 37 (2003) 1485-1504.
15. Barbero, E. J., Abdelal, and G. F., Caceres, A., *A micromechanics approach for damage modeling of polymer composites. Composite Structures* 67 (2005) 427-436.
16. Maimi, P., Camahno, P.P., Mayugo, J.A., and Davila, C.G., *A continuum damage model for composite laminates: Part I-Constitutive model*, *Mechanics of Materials*, 39(2007) 897-908.
17. Maimi, P., Camahno, P.P., Mayugo, J.A., and Davila, C.G., *A continuum damage model for composite laminates: Part II-Constitutive model*, *Mechanics of Materials*, 39(2007) 909-919.

18. Martinez, X., Oller, S., and Barbero, E. J., Chapter 6: Study of Delamination in Composites by Using the Serial/Parallel Mixing Theory and a Damage Formulation, in ECCOMAS 2008: Mechanical Response of Composites, pp. 119—140, Springer, Dordrecht, Netherlands, 2008. ISBN: 978-1-4020-8583-3.
19. William, K. V., Varizi, R., and Poursartip., A., A physically based continuum damage mechanics model for thin laminated composite structures, *International Journal of Solids and Structures* 40, pp. 2267-2300,2003.
20. Davila, C. G., and Camanho, P. P., *Physically Based Failure Criteria for FRP Laminates in Plane Stress*, NASA-TM,2003.
21. Pinho, S., Robinson, and P., Ianucci, L., Physically-based failure models and criteria for laminated fibre-reinforced composites with emphasis on fibre kinking: Part I: Development, *COMposites Part A*(1), pp. 63-73,2006.
22. Nuismer, R.J. and Tan, S.C., Constitutive Relations of a Cracked Composite Lamina, *Journal of Composite Materials*, 22 (1988) 306-321.
23. Yokozeki, T. and Aoki, T., Overall Thermoelastic Properties of Symmetric Laminates Containing Obliquely Crossed Matrix Cracks, *Composite Science and Technology*, 65 (2005) 1647-1654.
24. Caron, J.F. and Carreira, R. P., Interface behavior in laminates with simplified model, *Composite Science Technology*, 63 (2003) 633-640.
25. Cortes, D. H. and Barbero, E. J., Stiffness Reduction and Fracture Evolution of Obliquely Matrix Cracks in Composite Laminates, *Annals of Solid and Structural Mechanics*, Volume 1, Number 1 / January, pp. 29—40. 2010. DOI:10.1007/s12356-009-0001-5.
26. Barbero, E. J. and Cortes, D. H., A Mechanistic Model for Transverse Damage Initiation, Evolution, and Stiffness Reduction in Laminated Composites, (2010) *Composite Part B: Engineering*, Volume 41, Issue 2, March 2010, pp. 124—132. DOI: 10.1016/j.compositeb.2009.10.000.
27. McCartney, L. N., 2005, Energy- Based Prediction of Progressive Ply Cracking and Strength of General Symmetric Laminates Using an Homogenization Method, *Composite Part A*, 36:119-128.
28. McCartney, L. N., 2005, Energy-Based Prediction of Failure in General Symmetric Laminates, *Engineering Fracture Mechanics* 72:909-930.
29. Nilsson, K-F, Asp, L. E., Alpman, J. E., Nystedt, L, Delamination Buckling and Growth for Delaminations at Different Depths in a Slender Composite Panel, *Int. J. Solid and Struct.* 38 (2001) 3039—3071.
30. Riccio, A, Scaramuzzino, F., and Perugini, P, Embedded Delamination Growth in Composite Panels under Compressive Load, *Composites: Part B*, vol. 32 (2001) pp. 209—218.
31. Leguillon, D., Strength or toughness—A criterion for crack onset at a notch, *European Journal of Mechanics A/Solids* 21 (2002) 61–72.
32. Barbero, E. J., *Introduction to Composite Material Design—Second Edition*, 2010, CRC, Boca Raton, FL.
33. J. A. Nairn. *Matrix Microcracking in Composites*, volume 2 of *Polymer Matrix Composites*, pages 403–432. Elsevier Science, 2000.

34. J. A. Nairn. Finite Fracture Mechanics of Matrix Microcracking in Composites, pages 207–212. Application of Fracture Mechanics to Polymers, Adhesives and Composites. Elsevier, 2004.
35. J. A. Nairn and S. Hu. Matrix Microcracking, volume 9 of Damage Mechanics of Composite Materials, chapter 6, pages 187–244. Elsevier, 1994.
36. E. Adolfsson and P. Gudmundson. Matrix crack initiation and progression in composite laminates subjected to bending and extension. International Journal of Solids and Structures, 36(21):3131–3169, 1999.
37. Hahn, H. T., A mixed-mode fracture criterion for composite materials. Journal of Composites Technology and Research, 5 (1983) 26-29.
38. Bazant, Z., Crack band theory for fracture of concrete, Materiaux Constructions, 16 (1983) 155-177.
39. Oliver, J., A consistent characteristic length for smeared cracking model, International Journal for Numerical Methods in Engineering, 28 (1989) 461-474.
40. Donadon, M.V., Iannucci, L., Falzon, B.C., Hodgkinson, J.M., and De Almeida, S.F.M., A progressive failure model for composite laminates subjected to low velocity impact damage, Computers and Structures, 86 (2008) 1232-1252.
41. Varna J., Joffe, R., and Talreja, R., A synergistic damage-mechanics analysis of transverse cracking in $[\pm\theta/90_4]_s$ laminates, Composite Science and Technology 61, (2001) 657-665.